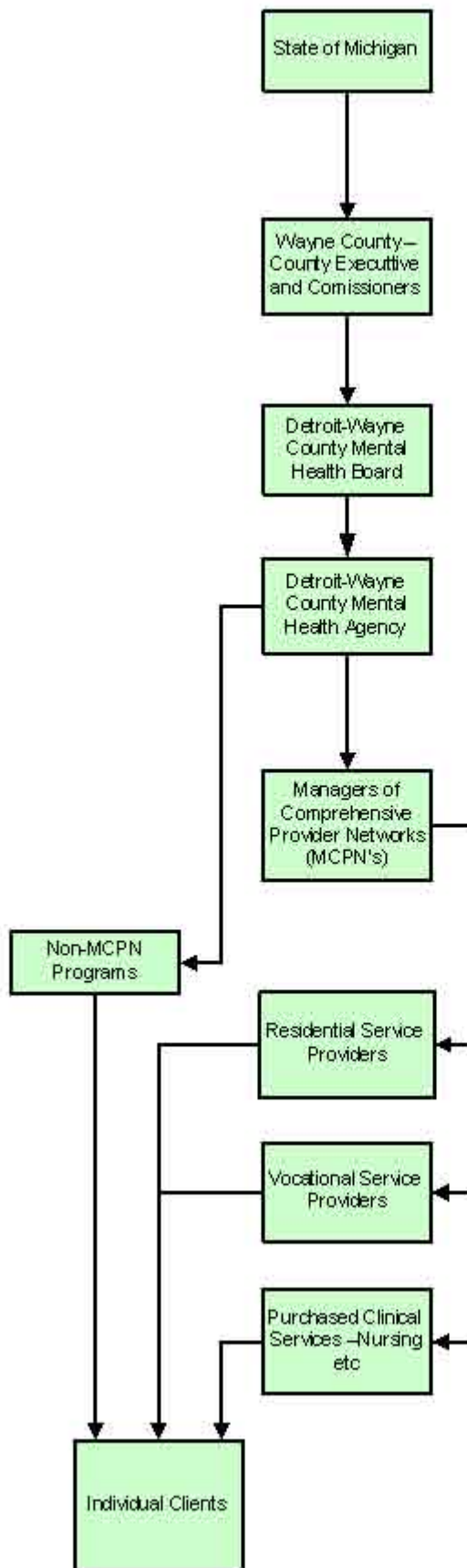


Service Delivery Process for Persons with Developmental Disabilities
Wayne County, Michigan
High Level Process Map



MICHIGAN LEGISLATURE recommends the annual budget which is approved by the **Governor** subject to line item vetoes.

MICHIGAN DEPARTMENT of COMMUNITY HEALTH Provides Medicaid Funding and the State General Fund allocation to Detroit-Wayne County Community Mental Health Agency subject to the approval by the Wayne County Board of Commissioners.

Wayne County Executive and Commissioners responsible for acceptance and administration of Medicaid Funding and the State General Fund allocation to Detroit-Wayne County Community Mental Health Agency. Also responsible for oversight and budget control of the Detroit-Wayne County Mental Health Board and Agency.

D-WC Mental Health Board is responsible for oversight of the D-W County Mental Health Agency and submission of spending recommendations to the Commission. Board assignments are made 6 by the Mayor of Detroit and 6 by the County.

D-WC MENTAL HEALTH AGENCY is responsible for administration of Medicaid and General Fund Allocations to Wayne County. Includes allocations to Provider Networks and to stand alone organizations for specific programs. Fiscal Year 2008/09 Budget Allocation was \$510 million. Agency employees work for the county.

MANAGERS OF COMPREHENSIVE PROVIDER NETWORKS (MCPN'S) receive funding from D-WCCMHA for services to persons with developmental disabilities and mental illness. Services are provided by residential and vocational service providers who contract with each MCPN. MCPN'S are responsible for establishing a Person Centered Plan and for service oversight for each client. Current MCPN's are Community Living Services, Synergy, ConsumerLink, CareLink and Gateway.

Residential and Vocational Service Providers and Clinical Service Providers are responsible for providing day to day supports and services identified in each client's Person Centered Plan. In 2008/09 Providers received significant funding cuts through 3 of 5 MCPN's despite the fact that there were no State reductions in the initial 2008/09 budget. There remains disagreement between the Agency, the MCPN's and the Providers concerning the cause of the short payments and the ability of providers to absorb the reductions without putting clients at risk and creating Health and Safety Issues.

Clients choose the MCPN and then the provider(s) that they prefer. They participate in Person Centered Planning Process with supporting family and community members. They can appeal service reductions and other rights infringements using the Recipient Rights process administered by the Agency.